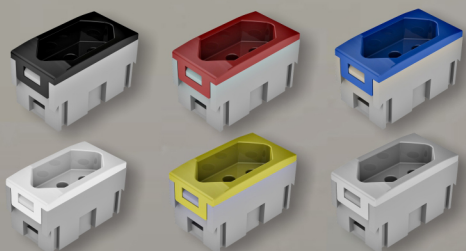




## Blocos

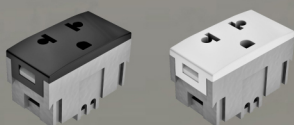
Tomadas Retangulares NBR 14136:2012  
Tipo Bloco 10A e 20A



Cor	10A	20A
Preto	DT 99230.10	DT 99230.20
Vermelho	DT 99231.10	DT 99231.20
Azul	DT 99232.10	DT 99232.20
Branco	DT 99233.10	DT 99233.20
Amarelo	DT 99234.10	DT 99234.20
Cinza	DT 99235.10	DT 99235.20

Outras cores sob consulta.

Tomadas Padrão Americano 2P + T - 15A

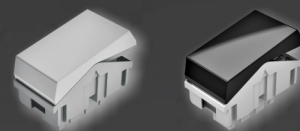


Preto	Branco
DT 99230.15	DT 99233.15

Para utilização em países sul americanos que utilizam padrão de encaixe tipo AVE e tomadas elétricas 2P + T ( Tipo Americano ).  
Estes blocos possuem o mesmo encaixe que as tomadas NBR 14136:2012.

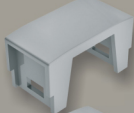






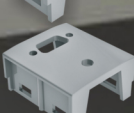



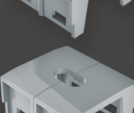



Interruptores



Bloco	Branco	Preto
Interruptor simples	DT 99330.00	DT 99330.01
Interruptor paralelo H	DT 99331.00	DT 99331.01
Interruptor bipolar	DT 99332.00	
Pulsador campainha	DT 99450.00	
Pulsador minuteira	DT 99451.00	

 **Blocos**

Outros Blocos		Branco	Preto	
	Cego	QM 99200.00	QM 99200.01	
	Coaxial	QM 99210.00	QM 99210.01	
	RJ 11	QM 99220.00	QM 99220.01	
	Bloco simples p/ P2	QM 99229.00	QM 99229.01	
	Conector Fêmea RJ45	QM 99240.00	QM 99240.01	Keystone
		QM 99242.00	QM 99242.01	Systemax
		QM 99244.00	QM 99244.01	Panduit Minicom
	Bloco simples p/ DB9/DB15 Macho ou Fêmea	QM 99250.00	QM 99250.01	
	Bloco simples Passa Cabos	QM 99254.00	QM 99254.01	
	Bloco duplo p/ DB9/DB15 Macho ou Fêmea +Fêmea P2	QM 99255.00	QM 99255.01	
	Bloco duplo p/ DB9/DB15 Macho ou Fêmea	QM 99260.00	QM 99260.01	
	Bloco simples HDMI	QM 99265.00	QM 99265.01	
	Bloco duplo HDMI*	QM 99266.00	QM 99266.01	
	Bloco simples USB	QM 99270.00	QM 99270.01	
	Bloco duplo USB*	QM 99271.00	QM 99271.01	
	Bloco duplo passa cabos	QM 99275.00	QM 99275.01	
	Bloco duplo cego	QM 99280.00	QM 99280.01	

\*OBS: Possui um furo e outro de espera futura.

Dutotec orienta a colocação dos blocos na mesma cor do produto. Para produtos cinza e outras cores orienta-se a utilização de blocos brancos.